



# signage

A **comprehensive** point of sale **collection**, offering **pavement**, **informational** and **directional signage** for **permanent** and **semi-permanent** applications. All our **systems** offer **easy graphic change** for **instant promotion** and **display**. A range of stylish **pedestrian guidance systems** are also available.

Ideally suited for **internal** and **external** environments. **Designed** with **safety in mind**, giving **peace of mind** in highly pedestrianised areas.

# signage and info points



A1, H20 Swingmaster

## H20 swingmaster

Our most popular semi-permanent outdoor sign. The H20 Swingmaster is a rugged, heavy-duty, double sided spring-mounted system, ideal for forecourts and most retail environments.

- Single or double-sided
- Designed for outdoor or indoor use
- Heavy duty spring mounted sign
- Snap action, front opening 32mm profile, satin anodised aluminium frame
- 30 litre moulded base can be filled with water or sand for extra stability
- Wheels on base to aid manoeuvrability
- Chrome rounded corners, health and safety feature
- Range holds A1 and A0 posters
- Price Point ■■



1. A1 and A0 H20 Swingmasters  
2. Wheeled base



A0 All purpose 'A' frame

## all purpose 'A' frames

The trusty 'A' frame still remains a firm favourite. Designed for outdoor or indoor use, suiting a variety of popular poster sizes.

- Single or double-sided
- Designed for outdoor or indoor use
- Heavy duty aluminium 'A' frame structure
- Snap action, front opening 32mm profile, satin anodised aluminium frame
- Galvanised steel backing
- Chrome rounded corners, health and safety feature
- Range holds A2, A1, A0 and 40" x 30" size posters
- No tools required for assembly
- Price Point ■



A1 All purpose 'A' frame

A2 All purpose 'A' frame



1. Chunky 32mm aluminium profile  
2. Locking arm



1500 x 420mm Gripframe Signholder

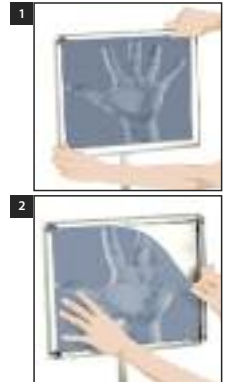
## signholders

Elevate your message with our freestanding signholder range. Portrait and landscape, these units are designed to allow a quick and easy change of poster graphics. Looking good in any retail or promotional environment.

- Single sided
- Floor standing display unit
- Heavy duty 300mm diameter circular steel base with alloy pole
- Snap action, front opening 28mm profile, satin anodised aluminium frame
- Mitred corners as standard
- Portrait/landscape available
- Custom colours also available
- Range holds A4, A3 and 1500mm size posters
- Price Point ■



1. A4 Portrait  
2. A4 Landscape  
3. A3 Portrait  
4. A3 Landscape



1 & 2. Change your poster in seconds

# signage and info points



1. A4 Portrait  
2. A3 Telescopic  
3. A3 Landscape

## information points

Slimline floor standing information points and menu holders. Can rotate from portrait to landscape in seconds. Ideal for entrance hall, showrooms and areas of public interest.

- Single sided
- Floor standing display units
- Stylish base and pole
- Snap action, front opening 25mm profile, satin anodised aluminium frame
- Change your poster in seconds
- Chrome rounded corners
- Adjustable for portrait and landscape positions
- Heavy duty telescopic option available to hold A3 portrait style posters
- Range holds A4 or A3 posters
- Price Point ■■■



1. Info points can rotate from portrait to landscape  
2. Chrome rounded corners



Product excludes panel

## apex – rigid panel holder

Practical and cost effective freestanding rigid board holder. Heavy duty and easy to assemble, this system is ideal for displaying information of a semi-permanent nature. The perfect choice for high pedestrian flow areas.

- Single or double-sided
- Rigid panel holder 600mm or 800mm wide
- Scratch resistant silver coated steel base
- Quick and easy to assemble
- Can hold substrates from 5mm to 40mm thickness
- Maximum height is 1800mm
- Optional carry bag available
- Optional magnetically attached aluminium gripframe can be used on steel base
- Variety of panel options available



1. Panel slots easily into base  
2. Optional magnetically attached aluminium gripframe



Chrome post with retractable tape system



## 'Q' management system

Two stylish 'Q' management systems. Four-way connectivity and retractable tape system ensures this system is flexible and versatile. These products are available as a 'standard' post and base or in a unique 'stackable' option. Ideal for high traffic areas.

- 1000mm high chrome unit for 'standard' option
- 1000mm high stainless steel unit for 'stackable' option
- Heavy duty bases add weight and stability
- 4 way connecting points on each post
- Bases includes anti-scuff and non-slip features
- Tamper proof locking mechanism
- 2000mm black webbing tape per post
- Simple assembly using spanner provided\*
- Standard unit – 4 or 1 post and base options
- Stackable unit – 4 or 2 post and base options



1. 'Standard' unit  
2. 'Stackable' unit

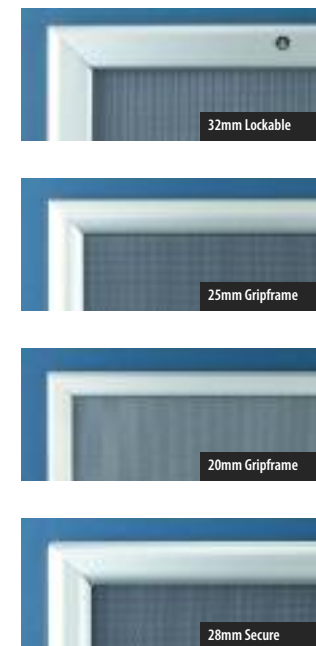
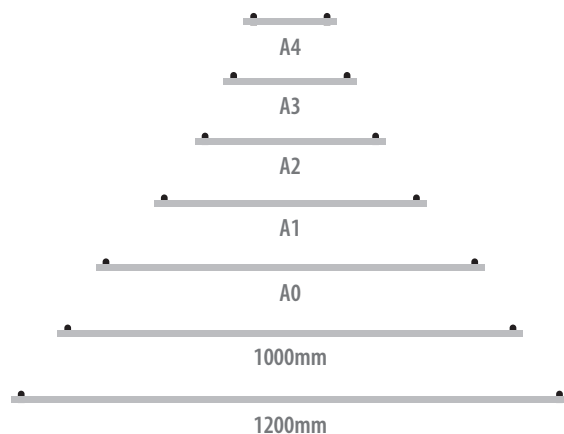
# poster snappers and gripframes



## poster snappers

Snap action aluminium hanging bars designed to suspend different widths of poster. Poster Snappers are ideal for hanging graphics in a retail environment.

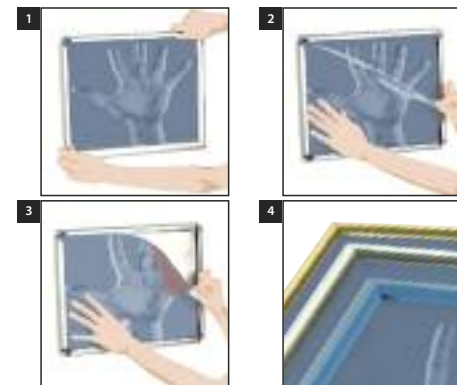
- Snap action, front opening 30mm profile, satin anodised aluminium
- Holds posters up to 500 microns thick
- Plastic end caps
- Change your poster in seconds
- Available in seven standard poster widths; A4, A3, A2, A1, A0, 1000mm and 1200mm
- Custom sizes also available (subject to MOQ)



## gripframe

The stylish satin anodised Gripframe range is perfect for promotion campaigns and display notices. A permanent fixture, simply change your image or promotion time after time. Ideal for retail, stadiums or industrial environments, the list is endless.

- Snap action, front opening extrusion, satin anodised aluminium frame
- Holds posters up to 500 microns thick
- 4 different profiles available
- Secure and lockable options available on selected profiles
- Can be landscape or portrait wall mounted
- No need to remove frame from wall, change your poster in seconds
- No tools required for assembly
- Comprehensive range of sizes available
- Custom sizes also available (subject to MOQ)



1-3. Change your poster in seconds without removing the frame from the wall

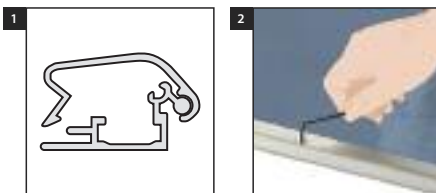
4. 28mm profile available in other finishes. POA.

# gripframe sizes and profiles

## 32mm lockable gripframe

- 32mm wide profile
- Satin anodised aluminium frame
- Mitred corners as standard
- Pre-drilled for wall mounting
- Unauthorised removal of poster very difficult
- Allen key style frame locking facility (key included)
- Available in six sizes; A3, A2, A1, A0, 40 x 30" and 60 x 40"
- Price Point ■■■■

SIZE	POSTER SIZE (mm)	EXTERNAL SIZE (mm)	VISUAL AREA (mm)	INDIVIDUAL BOXED WEIGHT (kg)
A0	A: 1189 B: 841	A: 1231 B: 883	A: 1169 B: 821	5.14
A1	A: 841 B: 594	A: 883 B: 636	A: 821 B: 574	3.00
A2	A: 594 B: 420	A: 636 B: 462	A: 574 B: 400	1.90
A3	A: 420 B: 297	A: 462 B: 339	A: 400 B: 277	1.21
40 x 30"	A: 1016 B: 762	A: 1058 B: 804	A: 996 B: 742	4.16
60 x 40"	A: 1524 B: 1016	A: 1566 B: 1058	A: 1504 B: 996	7.34

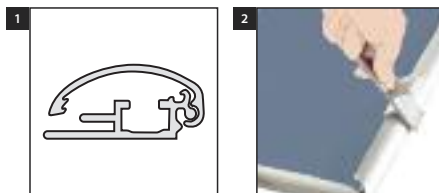


1. Frame profile  
2. Allen key locking mechanism

## 25mm secure gripframe

- 25mm wide profile
- Satin anodised aluminium frame
- Mitred corners as standard
- Pre-drilled for wall mounting
- Unauthorised removal of poster more difficult
- Tool (sold separately) required to open gripframe
- Available in five sizes; A4, A3, A2, A1 and A0
- Price Point ■■■

SIZE	POSTER SIZE (mm)	EXTERNAL SIZE (mm)	VISUAL AREA (mm)	INDIVIDUAL BOXED WEIGHT (kg)
A0	A: 1189 B: 841	A: 1220 B: 872	A: 1168 B: 820	4.22
A1	A: 841 B: 594	A: 872 B: 625	A: 820 B: 573	2.33
A2	A: 594 B: 420	A: 625 B: 451	A: 573 B: 399	1.35
A3	A: 420 B: 297	A: 451 B: 328	A: 399 B: 276	0.85
A4	A: 297 B: 210	A: 328 B: 241	A: 276 B: 189	0.54

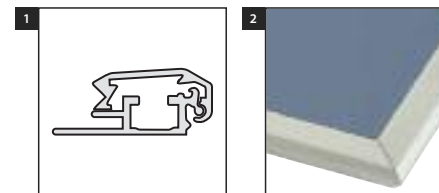


1. Frame profile  
2. Tool required to open gripframe

## 20mm gripframe

- 20mm wide profile
- Satin anodised aluminium frame
- Mitred corners as standard
- Pre-drilled for wall mounting
- No tools required
- Available in two sizes; A4 and A3
- Custom sizes available\*
- Price Point ■■■

SIZE	POSTER SIZE (mm)	EXTERNAL SIZE (mm)	VISUAL AREA (mm)	INDIVIDUAL BOXED WEIGHT (kg)
A3	A: 420 B: 297	A: 452 B: 329	A: 414 B: 291	0.79
A4	A: 297 B: 210	A: 329 B: 242	A: 291 B: 204	0.51

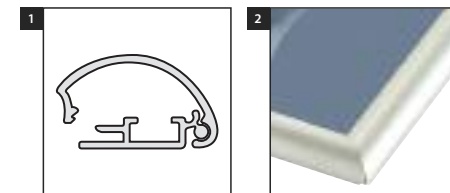


1. Frame profile  
2. Frame close-up

## 28mm gripframe

- 28mm wide most popular profile
- Satin anodised aluminium frame
- Mitred corners as standard
- Optional rounded corners in chrome finish
- Pre-drilled for wall mounting
- No tools required
- Available in nine sizes; A4, A3, A2, A1, A0, 1000 x 700mm, 30 x 20", 40 x 30" and 60 x 40"
- Custom sizes available\*
- Custom colours including polished gold and silver finishes also available\*
- Price Point ■■

SIZE	POSTER SIZE (mm)	EXTERNAL SIZE (mm)	VISUAL AREA (mm)	INDIVIDUAL BOXED WEIGHT (kg)
A0	A: 1189 B: 841	A: 1223 B: 875	A: 1167 B: 819	4.43
A1	A: 841 B: 594	A: 875 B: 628	A: 819 B: 572	2.36
A2	A: 594 B: 420	A: 628 B: 454	A: 572 B: 398	1.38
A3	A: 420 B: 297	A: 454 B: 331	A: 398 B: 275	0.83
A4	A: 297 B: 210	A: 331 B: 244	A: 275 B: 188	0.53
A: 1000mm B: 700mm	A: 1000 B: 700	A: 1034 B: 734	A: 978 B: 678	3.52
A: 30" B: 20"	A: 762 B: 508	A: 796 B: 542	A: 740 B: 486	2.09
A: 40" B: 30"	A: 1016 B: 762	A: 1050 B: 796	A: 994 B: 740	3.60
A: 60" B: 40"	A: 1524 B: 1016	A: 1558 B: 1050	A: 1502 B: 994	6.35



1. Frame profile  
2. Frame close-up

# product specification

PRODUCT	BOXED WEIGHT [kg]	BOXED LENGTH [mm]	BOXED WIDTH [mm]	BOXED DEPTH [mm]
---------	-------------------	-------------------	------------------	------------------

## MODULAR

### Fusion Rapid

1 Frame	18.81	A. 340 B. 1165	A. 340 B. 220	A. 250 B. 205
2 Frame	28.32	A. 340 B. 1165	A. 340 B. 220	A. 375 B. 315
3 Frame	37.83	A. 340 B. 1165 C. 1090	A. 340 B. 220 C. 220	A. 500 B. 220 C. 95
4 Frame	47.34	A. 340 B. 1165 C. 1090	A. 340 B. 220 C. 220	A. 625 B. 330 C. 95

### Fusion Versa

1 Frame straight	21.99	A. 340 B. 1165	A. 340 B. 220	A. 250 B. 205
2 Frame straight	25.48	A. 340 B. 1165	A. 340 B. 220	A. 250 B. 205
3 Frame straight	29.59	A. 340 B. 1165 C. 1090	A. 340 B. 220 C. 220	A. 250 B. 110 C. 190
4 Frame straight	33.08	A. 340 B. 1165 C. 1090	A. 340 B. 220 C. 220	A. 250 B. 110 C. 190
1 Frame curved	21.99	A. 340 B. 1165	A. 340 B. 220	A. 250 B. 205
2 Frame curved	25.48	A. 340 B. 1165	A. 340 B. 220	A. 250 B. 205
3 Frame curved	29.59	A. 340 B. 1165 C. 1090	A. 340 B. 220 C. 220	A. 250 B. 110 C. 190
4 Frame curved	33.08	A. 340 B. 1165 C. 1090	A. 340 B. 220 C. 220	A. 250 B. 110 C. 190
X - Frame	60.68	A. 340 B. 1165 C. 1090	A. 340 B. 220 C. 220	A. 625 B. 330 C. 190

PRODUCT	BOXED WEIGHT [kg]	BOXED LENGTH [mm]	BOXED WIDTH [mm]	BOXED DEPTH [mm]
---------	-------------------	-------------------	------------------	------------------

## CARRY EQUIPMENT

### POP-UP CASES

Standard case	11.75	1020	650	420
Meteor case	11.69	1020	650	420
Conversion kit for Meteor – fabric	4.50	A. 1000 B. 680	A. 200 B. 250	A. 200 B. 250
Conversion kit for Meteor – graphic	2.90	680	250	250
Zoom case	6.31	900	420	380
Black carry tube	1.32	1090	140	140
Fusion wheeled case	7.32	1150	500	400
Banner stand case – 800mm	3.40	860	300	140
Banner stand case – 1000mm	4.20	1045	300	110

### LIGHTBOXES

Eos Wall Mounted – A0	19.50	1360	1020	90
Eos Wall Mounted – A1	9.55	990	760	90
Eos Wall Mounted – A2	7.50	780	650	90
Eos Floor Standing – A1 Portrait	21.00	1960	815	120
Eos Floor Standing – A0 Landscape	34.00	1960	940	120

PRODUCT	BOXED WEIGHT [kg]	BOXED LENGTH [mm]	BOXED WIDTH [mm]	BOXED DEPTH [mm]
---------	-------------------	-------------------	------------------	------------------

## GRIPFRAMES

A0 - lockable 32mm profile	5.14	1241	893	30
A1 - lockable 32mm profile	3.00	893	646	30
A2 - lockable 32mm profile	1.90	646	472	30
A3 - lockable 32mm profile	1.21	472	349	30
40" x 30" - lockable 32mm profile	4.16	1068	814	30
60" x 40" - lockable 32mm profile	7.34	1576	1068	30
A0 - secure 25mm profile	3.95	1230	882	30
A1 - secure 25mm profile	2.33	882	635	25
A2 - secure 25mm profile	1.35	635	461	25
A3 - secure 25mm profile	0.80	461	338	25
A4 - secure 25mm profile	0.54	338	251	25
A3 - 20mm profile	0.79	462	339	21
A4 - 20mm profile	0.51	339	252	21
A0 - 28mm profile	4.43	1233	885	27
A1 - 28mm profile	2.36	885	638	27
A2 - 28mm profile	1.38	638	464	27
A3 - 28mm profile	0.83	464	341	27
A4 - 28mm profile	0.53	341	254	27
1000 x 700mm - 28mm profile	3.52	1044	744	27
30" x 20" - 28mm profile	2.09	806	552	27
40" x 30" - 28mm profile	3.60	1060	806	27
60" x 40" - 28mm profile	6.35	1568	1060	27

# product specification

PRODUCT	BOXED WEIGHT [kg]	BOXED LENGTH [mm]	BOXED WIDTH [mm]	BOXED DEPTH [mm]
---------	-------------------	-------------------	------------------	------------------

## POSTER SNAPPERS

1200mm poster snapper	1.31	1250	100	90
1000mm poster snapper	1.18	1050	100	90
841mm poster snapper	1.08	890	100	90
594mm poster snapper	0.86	650	100	90
420mm poster snapper	0.70	470	100	90
297mm poster snapper	0.51	350	100	90
210mm poster snapper	0.35	260	100	90

## SIGNAGE

H20 Swingmaster – A0	28.50	A. 1350 B. 820	A. 1000 B. 570	A. 90 B. 190
H20 Swingmaster – A1	22.30	A. 1000 B. 820	A. 770 B. 570	A. 90 B. 190
A0 All purpose 'A' frame	16.95	1520	910	115
A1 All purpose 'A' frame	10.45	1250	650	120
A2 All purpose 'A' frame	6.80	1050	480	120
40 x 30" All purpose 'A' frame	11.50	1315	830	120
1500 Sign holder	6.80	1700	465	60
A3 Sign holder - Landscape	5.10	945	345	65
A3 sign holder – Portrait	5.00	945	345	65
A4 Sign holder – Landscape	5.00	945	345	65
A4 Sign holder – Portrait	4.90	945	345	65
A3 Info point	3.72	950	350	95
A3 Telescopic info point	6.10	1060	370	80
A4 Info point	3.10	950	270	80
Apex 600mm	5.16	640	280	105
Apex 800mm	6.70	840	290	105
'Q' Management single post kit	6.90	A. 900 B. 350	A. 95 B. 350	A. 95 B. 75
'Q' Management 4 post kit	27.60	A. 900 B. 350	A. 190 B. 350	A. 190 B. 300
Stackable 'Q' management 2 post kit	16.50	900	410	130
Stackable 'Q' management 4 post kit	33.00	900	410	260

PRODUCT	BOXED WEIGHT [kg]	BOXED LENGTH [mm]	BOXED WIDTH [mm]	BOXED DEPTH [mm]
---------	-------------------	-------------------	------------------	------------------

## LITERATURE STANDS

Media 4 Mesh	5.29	485	350	290
Media 4 Deluxe	7.2	530	370	340
Media Compact Portrait	8.90	470	360	170
Media Compact Landscape	8.8	410	395	185
Media Communicator 2x4	9.77	1605	525	75
Media Communicator 4x4	16.0	1610	965	75
Media Communicator 2x4 wall	11.49	A. 1630 B. 480	A. 555 B. 435	A. 115 B. 140
Media Twin Post Zig Zag	8.95	1420	340	340
Media 10 tower	8.95	1420	340	340
Media 13 tower	5.41	810	395	165
Media 16 tower	5.34	810	395	165

## GRAPHIC PANEL SIZES

### Banner Stands

- **Alpha**  
Finished graphic panel size: 2300 x 800mm (inc. 200mm bleed)  
Visual graphic area: 2090 x 800mm (10mm hidden behind hanger).
- **Sidewinder**  
Finished graphic panel size: 2300 x 1500/1200/1000/800/600mm (inc. 200mm bleed)  
Visual graphic area: 2100 x 1500, 1200/1000/800/600mm.
- **Pod**  
Finished graphic panel size: 2300 x 800mm (inc. 200mm bleed)  
Visual graphic area: 2100 x 800mm.

- **Genie**  
Finished graphic panel size: 2315 x 1000/800mm (inc. 200mm bleed)  
Visual graphic area: 2100 x 1000mm /800mm (this allows for the 14mm of graphic hidden by the top gripper rail).
- **Zeta**  
Finished graphic panel size: 2300 x 800mm (inc. 200mm bleed)  
Visual graphic area: 2100 x 800mm.
- **Omega Giant Graphic**  
Finished graphic panel size: from 2300 to 3200mm x 800mm (inc. 200mm bleed)  
Visual graphic area: from 2100 to 3000 x 800mm.
- **Omega Fabric**  
Fabric panel area: 2000 x 780mm.

### Static Banner Stands

- **Cobra**  
Finished graphic panel size: 2100 x 800mm  
Visual graphic area: 2072 x 800mm.
  - **Anaconda**  
Finished graphic panel size: from 1000 to 3000mm x 1000/800/600mm.
  - **Salamander**  
Finished graphic panel size: 2100 x 800mm.
  - **Opto**  
Finished graphic panel size: (3 panels) 2140 x 555mm.
- ### Outdoor Banner Stands
- **Vision**  
Finished graphic panel size: 1000 x 2000mm.

- **Mistral**  
Finished graphic panel size: 1570 x 460mm.
- **Vista**  
Finished graphic panel size: from 2500 to 2000 x 2500mm .
- **Polar**  
Finished graphic panel size: 1200 to 2000 x 650 to 800mm.

### Modular

- **Fusion - Rapid**  
Panel size: 1944 x 950mm  
Substrate thickness: 8mm – max.
- **Fusion - Versa**
  - Straight panel: 2000 x 1000mm.
  - Inside curved panel: 2000 x 1000mm.
  - Outside curved panel: 2000 x 1008mm.

### Pop-up Stands

- **Advantage**  
Inside curve: 2130 x 653mm  
Outside curve: 2130 x 757mm
- **Supremacy**  
Regular.  
Straight: 2140 x 700mm  
Inside curve: 2140 x 653mm  
Outside curve: 2140 x 758mm  
'D' end: 2140 x 600mm.
- Xtra  
Straight: 2270 x 741mm  
Inside curve: 2270 x 675mm  
Outside curve: 2270 x 824mm  
'D' end: 2270 x 675mm.

PRODUCT	BOXED WEIGHT [kg]	BOXED LENGTH [mm]	BOXED WIDTH [mm]	BOXED DEPTH [mm]
---------	-------------------	-------------------	------------------	------------------

## DISPLAY PLINTHS

<b>Symphony Graphic</b>				
Symphony single plinth 1000mm	6.20	A. 630 B. 1050	A. 560 B. 205	A. 60 B. 205
Symphony single plinth 750mm	5.90	A. 630 B. 1050	A. 560 B. 205	A. 60 B. 205
Symphony single plinth 500mm	5.50	A. 630 B. 1050	A. 560 B. 205	A. 60 B. 205
Symphony workstation plinth	10.10	A. 1050 B. 1050	A. 560 B. 205	A. 60 B. 205
<b>Symphony Fabric</b>				
Symphony single plinth 1000mm	11.10	A. 1050 B. 1050	A. 560 B. 205	A. 60 B. 205
Symphony single plinth 750mm	6.20	A. 630 B. 1050	A. 560 B. 205	A. 60 B. 205
Symphony single plinth 500mm	5.80	A. 630 B. 1050	A. 560 B. 205	A. 60 B. 205
Symphony workstation plinth	6.70	A. 630 B. 1050	A. 560 B. 205	A. 60 B. 205
Symphony In-Store-Promotion unit	10.18	930	840	115

DESCRIPTION	COLOUR	CODE	PRICE
-------------	--------	------	-------

## SIGNAGE

### GRIPFRAME SWINGMASTER SIGNS – 32mm PROFILE – ROUNDED CORNERS

H20 Swingmaster – A1 [841 x 594mm] size	Silver & grey	91008	£175.00
H20 Swingmaster – A0 [1189 x 841mm] size	Silver & grey	91244	£215.00

### ALL PURPOSE 'A' BOARDS – 32mm PROFILE – ROUNDED CORNERS

A2 [594 x 420mm] 'A' Frame – double sided with galvanised steel backing	Silver	90621	£75.00
A1 [841 x 594mm] 'A' Frame – double sided with galvanised steel backing	Silver	90620	£84.50
A0 [1189 x 841mm] 'A' Frame – double sided with galvanised steel backing	Silver	90619	£99.00
40" x 30" 'A' Frame – double sided with galvanised steel backing	Silver	91242	£115.00

### GRIPFRAME SIGN HOLDERS – 28mm PROFILE – MITRED CORNERS

1500mm Gripframe signholder with circular base	Silver	40174	£108.00
Portrait A4 [297 x 210mm] Gripframe signholder with circular base	Silver	40010/3	£48.00
Landscape A4 [210 x 297mm] Gripframe signholder with circular base	Silver	40010	£48.00
Portrait A3 [420 x 297mm] Gripframe signholder with circular base	Silver	40011/3	£51.00
Landscape A3 [297 x 420mm] Gripframe signholder with circular base	Silver	40011	£51.00

### GRIPFRAME INFORMATION POINTS – 25mm PROFILE – ROUNDED CORNERS

A4 [297 x 210mm] portrait/landscape Information point	Silver	90625	£73.00
A3 [420 x 297mm] portrait/landscape Information point	Silver	90626	£80.00
A3 [420 x 297mm] portrait Telescopic Information point	Silver	90624	£92.00

### APEX RIGID BANNER SYSTEM

600mm wide base unit	Silver	40133	£45.00
800mm wide base unit	Silver	40150	£55.00

Range of panel sizes for Apex available POA.

### APEX RIGID BANNER SYSTEM – ACCESSORIES

Aluminium Gripframe with magnetic backing 148 x 420mm	Silver	40141	£15.00
Apex base carry bag	Blue & green	90700/91099	£35.00

DESCRIPTION	COLOUR	CODE	PRICE
-------------	--------	------	-------

## SIGNAGE [cont.]

### 'Q' MANAGEMENT – PEDESTRIAN GUIDANCE SYSTEM

Standard 'Q' Management – Four post kit	Chrome	30322	£200.00
Standard 'Q' Management – Single post kit	Chrome	30321	£65.00
Stackable 'Q' Management – Four post kit	Stainless Steel	30325	£320.00
Stackable 'Q' Management – Two post kit	Stainless Steel	30323	£160.00
Wall mounted 'Q' Management	Chrome	91331	£28.00
Wall mounted receiving bracket	Chrome	91332	£10.00

## POSTER SNAPPERS

### SET OF 2 (30mm PROFILE)

210mm [A4 portrait]	Silver	40152	£8.50
297mm [A4 landscape/A3 portrait]	Silver	40153	£8.75
420mm [A3 landscape/A2 portrait]	Silver	40155	£10.50
594mm [A2 landscape/A1 portrait]	Silver	40157	£12.00
841mm [A1 Landscape/A0 Portrait]	Silver	40159	£14.00
1000mm	Silver	40161	£15.50
1200mm	Silver	40162	£17.00

## GRIPFRAMES

### 32mm GRIPFRAME PROFILE LOCKABLE FRAME – MITRED CORNERS

A0 [1189 x 841mm]	Silver	90607	£57.50
A1 [841 x 594mm]	Silver	90606	£41.00
A2 [594 x 420mm]	Silver	90605	£25.00
A3 [420 x 297mm]	Silver	90604	£21.00
40" x 30"	Silver	90609	£59.00
60" x 40"	Silver	90610	£86.00

All lockable gripframes include an Allen key.

DESCRIPTION	COLOUR	CODE	PRICE
<b>25mm GRIPFRAME PROFILE SECURE FRAME – MITRED CORNERS</b>			
A0 [1189mm x 841mm]	Silver	90595	£41.50
A1 [841 x 594mm]	Silver	90594	£24.00
A2 [594 x 420mm]	Silver	90593	£17.50
A3 [420 x 297mm]	Silver	90592	£13.00
A4 [297 x 210mm]	Silver	90591	£10.00
Tool to open secure Gripframes	n/a	90630	£1.50
<b>20mm GRIPFRAME PROFILE – MITRED CORNERS</b>			
A3 [420 x 297mm]	Silver	90588	£13.00
A4 [297 x 210mm]	Silver	90587	£10.50
<b>28mm GRIPFRAME PROFILE – MITRED CORNERS</b>			
A0 [1189mm x 841mm]	Silver	793400	£35.00
A1 [841 x 594mm]	Silver	793401	£20.00
A2 [594 x 420mm]	Silver	793402	£15.00
A3 [420 x 297mm]	Silver	793403	£11.00
A4 [297 x 210mm]	Silver	793404	£8.50
1000 x 700mm	Silver	793410	£39.00
30" x 20"	Silver	793409	£26.00
40" x 30"	Silver	40095	£38.00
60" x 40"	Silver	40085	£54.00
<b>28mm GRIPFRAME PROFILE – ROUNDED CORNERS</b>			
A0 [1189mm x 841mm]	Silver	793400/0	£46.50
A1 [841 x 594mm]	Silver	793401/0	£24.50
A2 [594 x 420mm]	Silver	793402/0	£18.50
A3 [420 x 297mm]	Silver	793403/0	£14.50
A4 [297 x 210mm]	Silver	793404/0	£12.00
1000 x 700mm	Silver	793410/0	£41.50
30" x 20"	Silver	793409/0	£28.50
40" x 30"	Silver	50648	£40.50
60" x 40"	Silver	50603	£56.50

DESCRIPTION	COLOUR	CODE	PRICE
<b>LITERATURE STANDS</b>			
<b>MEDIA 4 RANGE</b>			
Media 4 mesh *	Silver & Chrome	792400	£85.00
Media 4 Deluxe *	Silver & Chrome	90996	£120.00
<i>*Includes carry bag.</i>			
<b>MEDIA COMPACT RANGE</b>			
Media Compact Portrait – 6 x A4 [297 x 210mm] portrait shelves including aluminium carry case	Silver & Chrome	90482	£105.00
Media Compact Landscape – 7 x A4 [210 x 297mm] landscape shelves including aluminium carry case	Silver & Chrome	90995	£115.00
<b>MEDIA COMMUNICATOR RANGE</b>			
Communicator 2x4 Single – Floor standing – holds 16 x A4 [297 x 210mm] portrait brochures	Silver	91000	£166.00
Communicator 4x4 Single – Floor standing – holds 32 x A4 [297 x 210mm] portrait brochures	Silver	91001	£254.00
Communicator 2x4 – Wall mounted – holds 8 x A4 [297 x 210mm] portrait brochures	Silver	90629	£109.00
<b>MEDIA ZIG ZAG RANGE</b>			
Twin post Zig Zag – Floor standing – holds 6 x A4 [297 x 210mm] portrait brochures	Silver	90994	£130.00
<b>MEDIA TOWER RANGE</b>			
Media Tower 10 – 10 x A4 [297 x 210mm] portrait pockets*	Silver & chrome	40044	£105.00
Media Tower 13 – 8 x A5 [210 x 148mm] portrait pockets and 5 x A4 [297 x 210mm] portrait pockets*	Silver & chrome	40096	£155.00
Media Tower 16 – 16 x A5 [210 x 148mm] portrait pockets*	Silver & chrome	40097	£155.00
<i>*Includes carry bag.</i>			
<b>DISPLAY PLINTHS</b>			
<b>Symphony Display Plinths – with ready-to-print plain wraps</b>			
Single – 1000mm high plinth with shaped laminate top plus white polypropylene wrap and fixings	n/a	40112	£115.00
Single – 750mm high plinth with shaped laminate top plus white polypropylene wrap and fixings	n/a	40113	£110.00